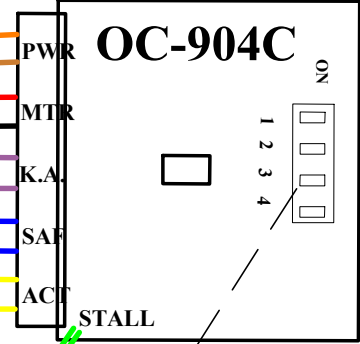


For dipswitch settings see chart at right below other OC-904.



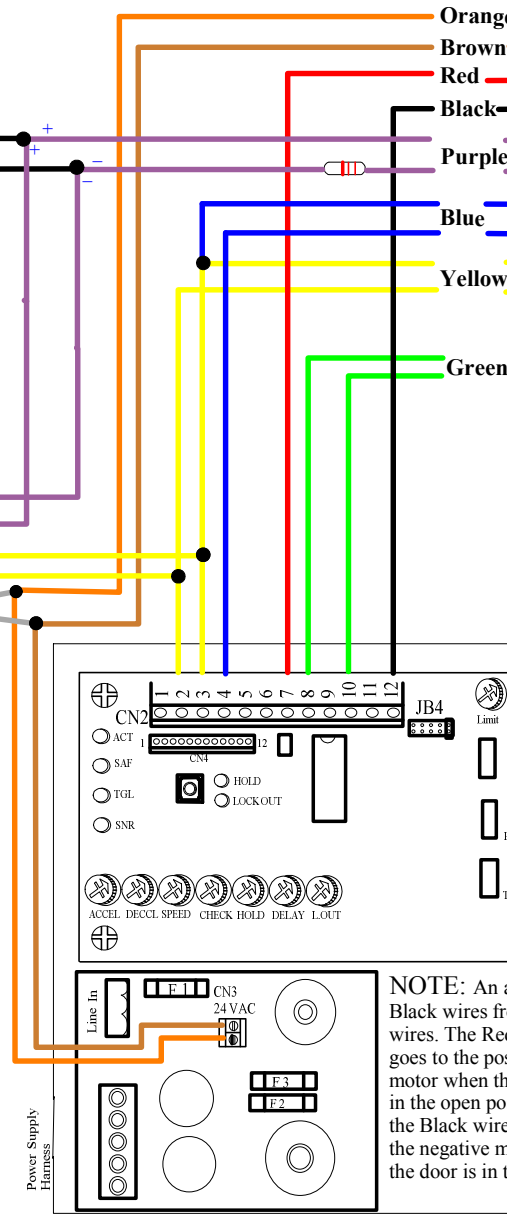
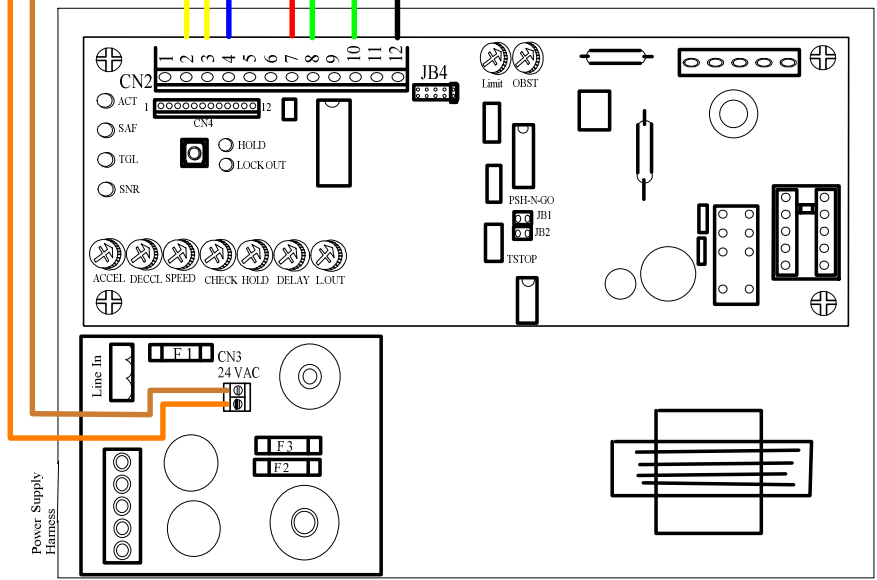
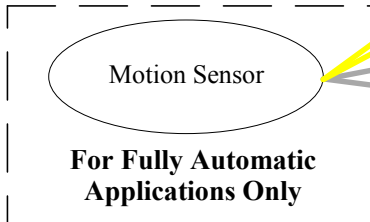
NOTE:

For Knowing Act applications all activating devices must connect to the purple wires of the OC-904 controls (N.O. dry contact only). The purple wires connect in parallel. Be sure to Observe Polarity of the purple wires(+ to +, - to -).



Dipswitch Settings	OFF	ON
1. Safety Output	N.O.	N.C.
2. Stall Output	N.O.	N.C.
3. Auto / K.A.	Automatic	Knowing Act
4. Future Use		

Fully Automatic	Knowing Act
1. OFF	1. OFF
2. OFF	2. OFF
3. OFF	3. ON
4. OFF	4. OFF



NOTE: An alternate connection for the Red and Black wires from the OA-904c control is the motor wires. The Red wire from the OA-904c control goes to the positive side of the motor when the door is in the open position and the Black wire goes to the negative motor wire when the door is in the open position.

INSTALLATION NOTES:

1. Set all door speeds and verify proper operation of door prior to final connection of sensor system.
2. Technician MUST WALK TEST to verify function and detection patterns comply with ANSI/BHMA A156.10 requirements.

Title: Horton 4190 Simultaneous Pair with Elite	Drawing #: 01HOR4190ELI02
Drawing By: RNG	Date: 03-14-08
Sheet: 1 of 1	
Optex Technologies Inc. 3882 Del Amo Blvd., Suite 604, Torrance, CA 90503 Office: (800)877-6656, Fax: (310)214-8655	